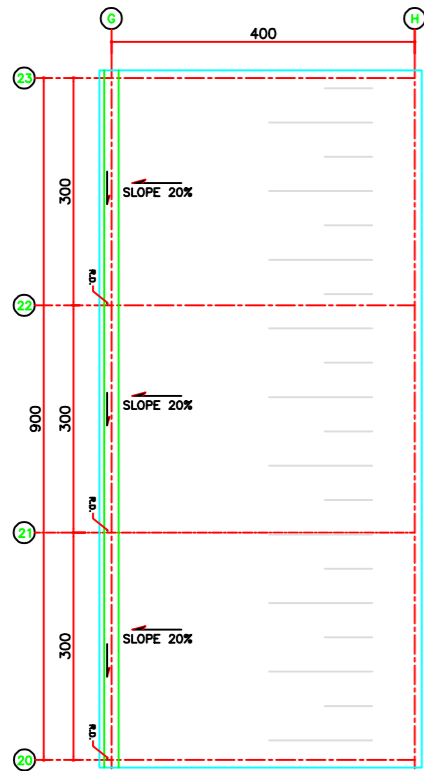
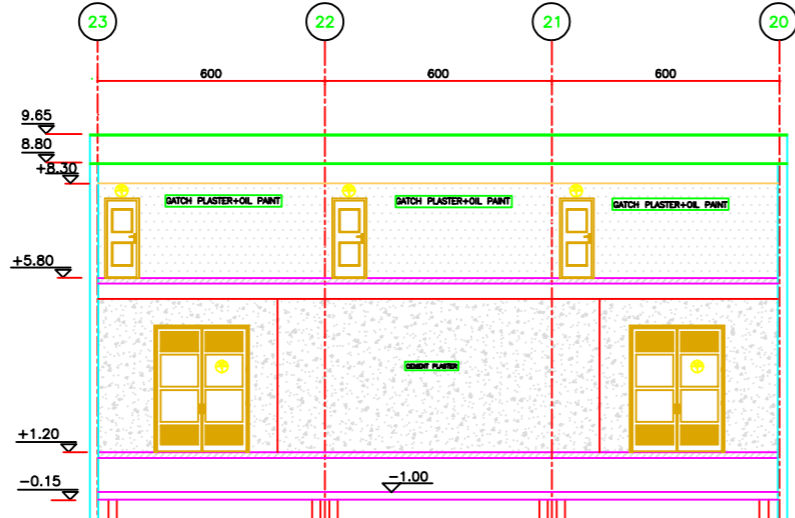


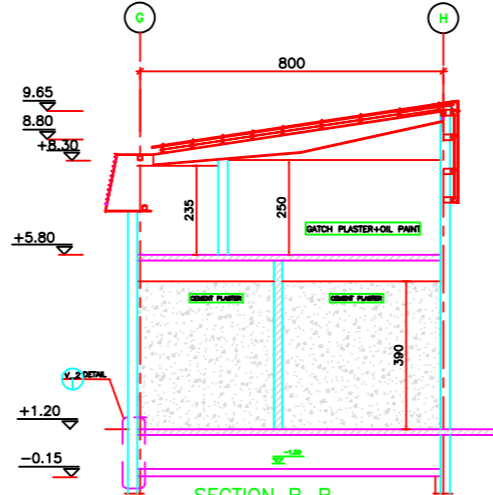
ISSUES				
REV	DATE	COPY	ISSUED TO	
1400.01.24	S.C.		KERMAN BAREZ TIRE CO.	



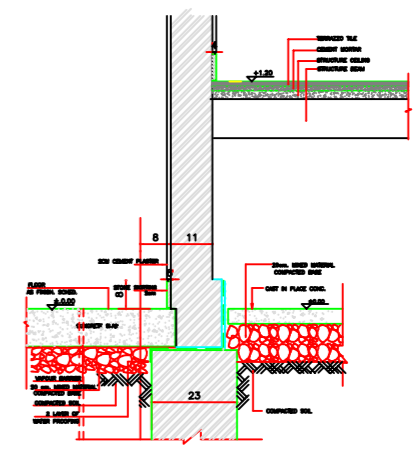
ROOF PLAN
SCALE 1:100



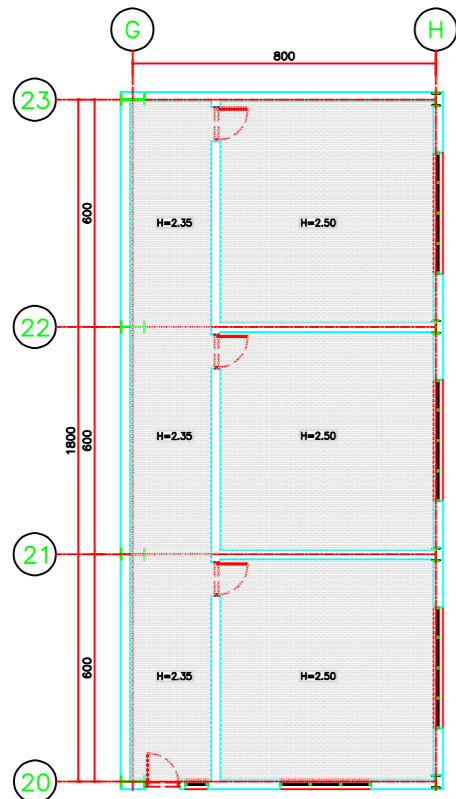
SECTION A-A
1:100



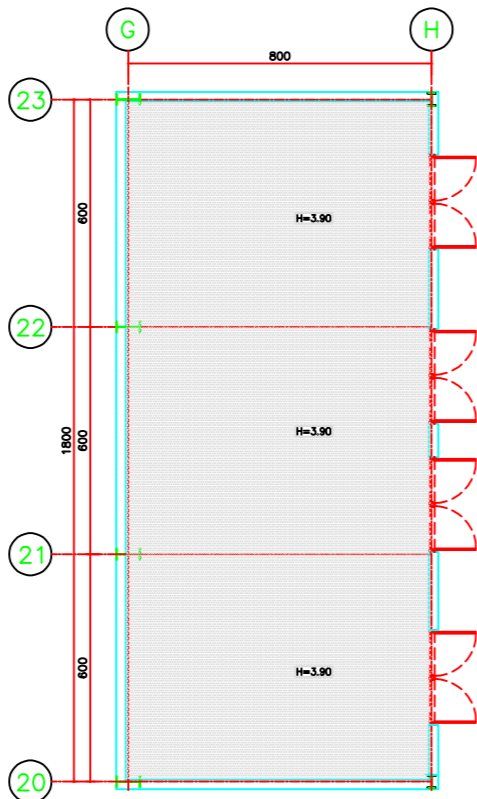
SECTION B-B
1:100



DETAIL V-2
SCALE -

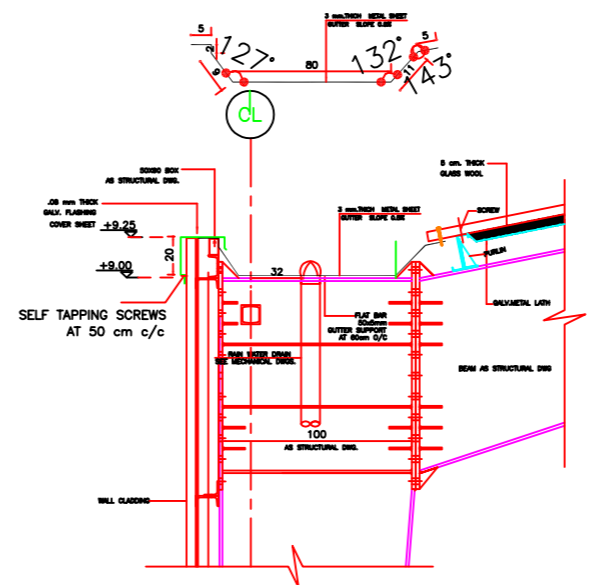


SUSPENDED CEILING PLAN @ ELEV. +5.80
SCALE 1:100



SUSPENDED CEILING PLAN @ ELEV. +1.20
SCALE 1:100

GATCH PLASTER



DETAIL V-1
SCALE -

NOTES

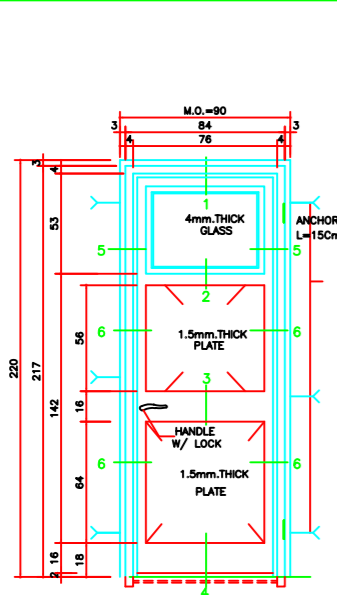
- 1-WORK THIS DRAWINGS WITH STRUCTURAL MECHANICAL & ELECTRICAL DRAWINGS .
- 2-ALL GUTTER ARE 3mm. THICK PLATE PROTECTE BY 2 COATS OF EPOXY PAINT INSIDE.

REV.	NO. OF Δ	DATE	REVISION	DRAWN	CHE'D	APP'D

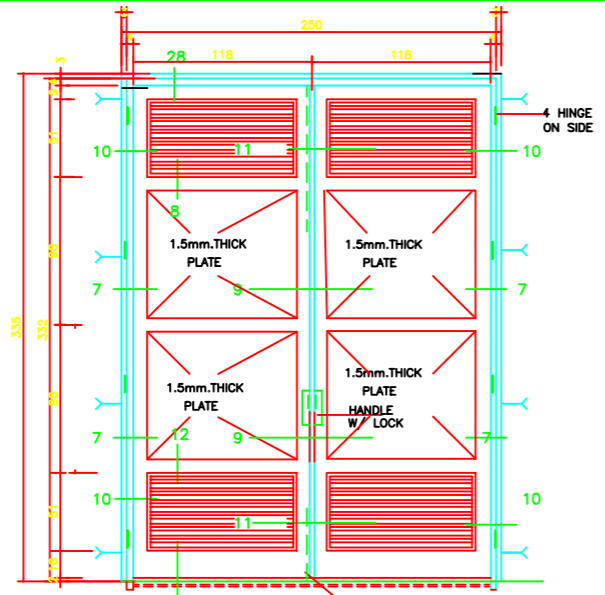
		KERMAN BAREZ TIRE CO. RADIAL TIRE MANUFACTURING PLANT-KERMAN(EXTENSION) TIRE PRE FABRICATING(SUBSTATION)	
SCALE	PROJECT NUMBER	9862	
DRAWN S.V.	ROOF PLAN, SEC. A-A & B-B AND SUSPENDED CEILING @ ELEV. 1.2m & 5.8m AND DETAILS	DRAWING NUMBER	1.621102
CHECKED P.A.		DRAWING NUMBER REV.	
APPROVED S.J.			
DATE 1400.01.24			
CAD FILE 62621102	CLIENT'S DRAWING NUMBER		

This document contains proprietary information, and except with written permission of "Andishehvarzan Sanat JAM" Consulting Engineers, such information shall not be published, or disclosed to others, or used for any purpose and documents shall not be duplicated in whole or in part.

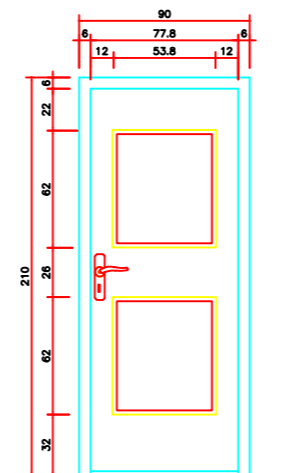
ISSUES			
REV	DATE	COPY	ISSUED TO
1400.01.24	S.C.		KERMAN BAREZ TIRE CO.



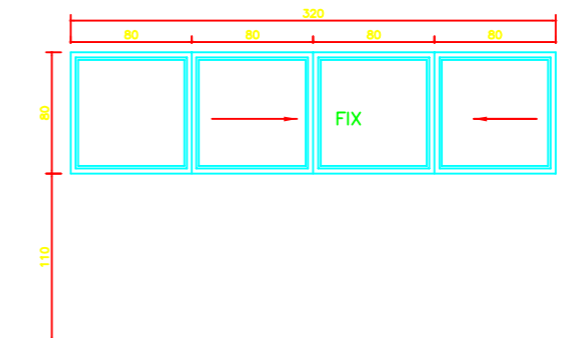
METAL DOOR TYPE MD 2 SCALE 1:20



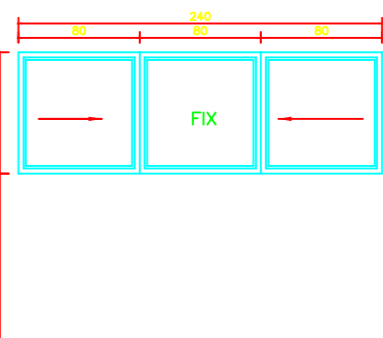
METAL DOOR TYPE MD 1 SCALE 1:25



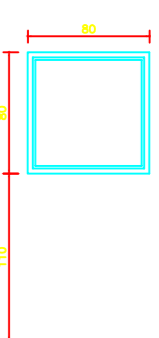
WOODEN DOOR WD 1 SCALE 1:20



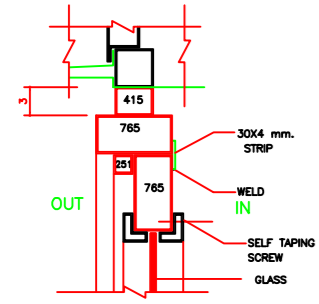
UPVC WINDOW UPVC 1 SCALE 1:20



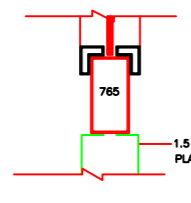
UPVC WINDOW UPVC 2 SCALE 1:20



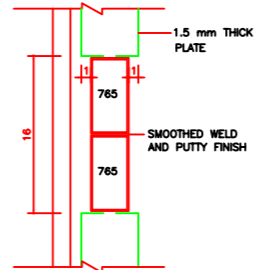
UPVC WINDOW UPVC 3 SCALE 1:20



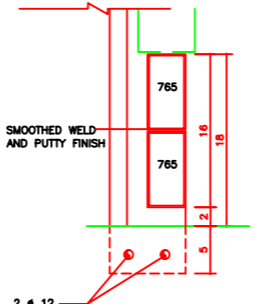
DETAIL (1) SCALE 1:4



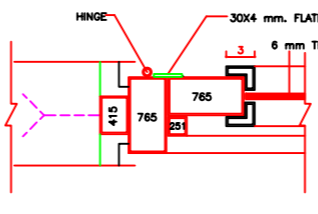
DETAIL (2) SCALE 1:4



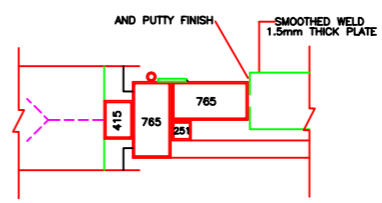
DETAIL (3) SCALE 1:4



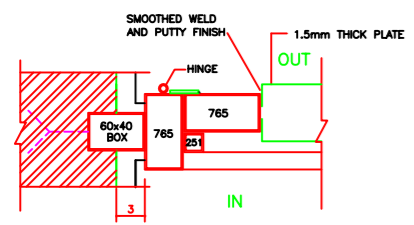
DETAIL (4) SCALE 1:4



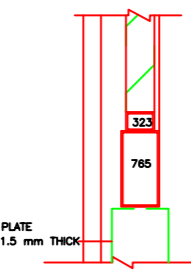
DETAIL (5) SCALE 1:4



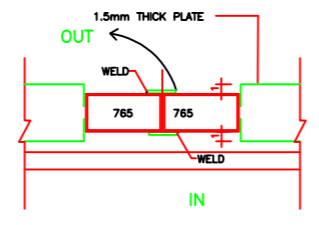
DETAIL (6) SCALE 1:4



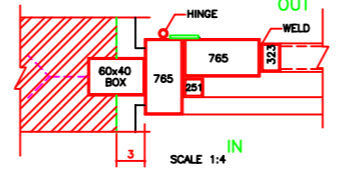
DETAIL (7) SCALE 1:4



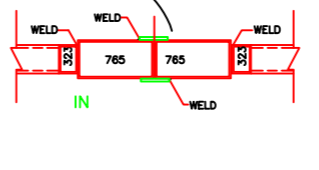
DETAIL (8) SCALE 1:4



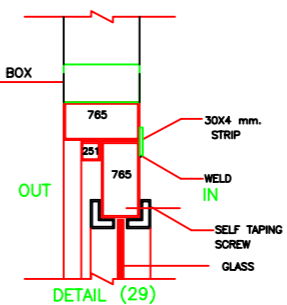
DETAIL (9) SCALE 1:4



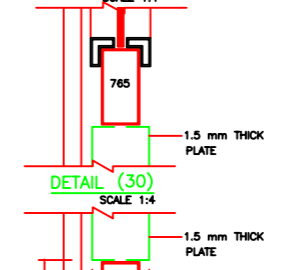
DETAIL (10) SCALE 1:4



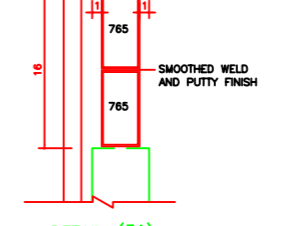
DETAIL (11) SCALE 1:4



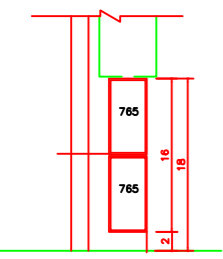
DETAIL (29) SCALE 1:4



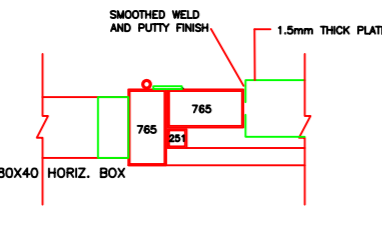
DETAIL (30) SCALE 1:4



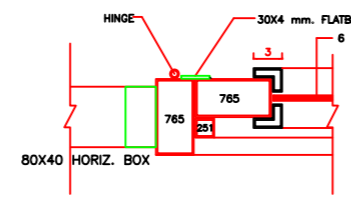
DETAIL (31) SCALE 1:4



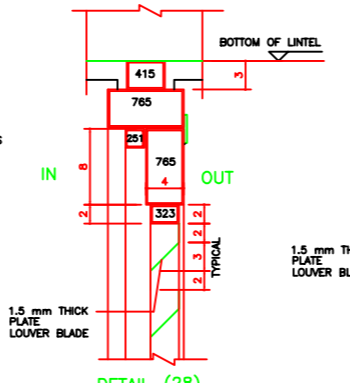
DETAIL (32) SCALE 1:4



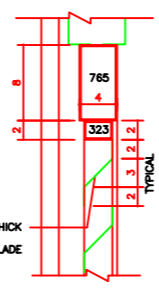
DETAIL (33) SCALE 1:4



DETAIL (34) SCALE 1:4



DETAIL (28) SCALE 1:4



DETAIL (12) SCALE 1:4

NOTES

- FOR LIST OF DRAWINGS SEE DWG.NO 1.121101
- WORK THIS DRAWINGS WITH STRUCTURAL ,MECHANICAL & ELECTRICAL DRAWINGS
- ALL OPENING SHALL BE MEASURED BEFORE FABRICATION OF DOORS &WINDOWS.
- ALL STEEL WORK SHALL BE SHOP PAINTED BY TWO COATS OF ANTI-RUST PAINT.
- INSERT 30X2mm. RUBBER STRIP BETWEEN ALL(DOORS , WINDOWS) JOINTS IN ORDER TO ACHIEVE AIRTIGHTNESS.
- FIXING DETAILS OF EXHAUST FAN TO WINDOW FRAMES SHALL BE DETERMINED BY WINDOWS MANUFACTURER IN ACCORDANCE WITH ACTUAL FAN SPECIFICATIONS.
- DOOR ,WINDOW AND FLASHING MANUFACTURER MUST PROVIDE SHOP DRAWING FOR APPROVAL OF THE ENGINEER PRIOR TO FABRICATION.
- LOCK MUST BE OPENED FROM BOTH SIDE.

REV. NO.	OF Δ	DATE	REVISION	DRAWN	CHE'D	APP'D

KERMAN BAREZ TIRE CO.
RADIAL TIRE MANUFACTURING PLANT-KERMAN(EXTENSION)
TIRE PRE FABRICATING(SUBSTATION)

SCALE	TYPICAL METAL AND WOODEN DOORS,UPVC	PROJECT NUMBER	9862
DRAWN	S.V.	DRAWING NUMBER	REV.
CHECKED	P.A.	WINDOWS ELEVATIONS & DETAILS	1.621103
APPROVED	S.J.	CLIENT'S DRAWING NUMBER	
DATE	1400.01.24		
CAD FILE	62621103		

This document contains proprietary information, and except with written permission of "Andishevarzan Sanat JAM" Consulting Engineers, such information shall not be published, or disclosed to others, or used for any purpose and documents shall not be duplicated in whole or in part.

D

C

B

A